



1000000 VORSCHAU





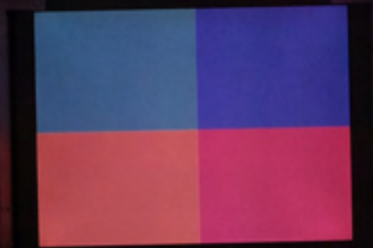
KUNST


A long, dark tunnel with a projection at the end. The tunnel is dimly lit, with the light from the projection at the far end illuminating the walls and floor. The projection shows a person in a wheelchair and the word "KEIT" in large, bold, black letters on a white background.

KEIT

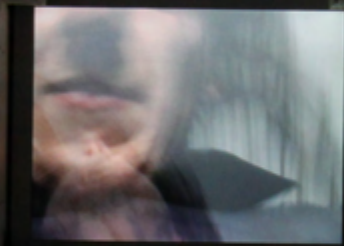
A dark, narrow tunnel with a bright opening at the end. The word "Rot." is projected onto the wall at the end of the tunnel. The tunnel walls are dark and textured, and the floor is also dark. The light from the opening creates a strong contrast with the dark interior.

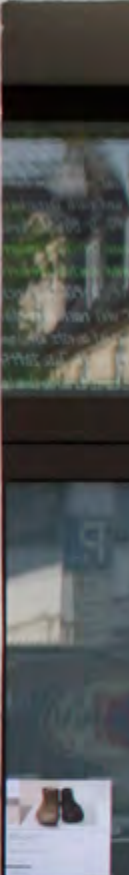
Rot.



A dark, narrow tunnel with concrete walls and ceiling. At the far end of the tunnel, a bright white screen is illuminated. The screen displays the name "Matt schwarz" in a black, monospaced font. The tunnel is mostly dark, with some light reflecting off the floor and walls near the screen.

Matt
schwarz











BUS























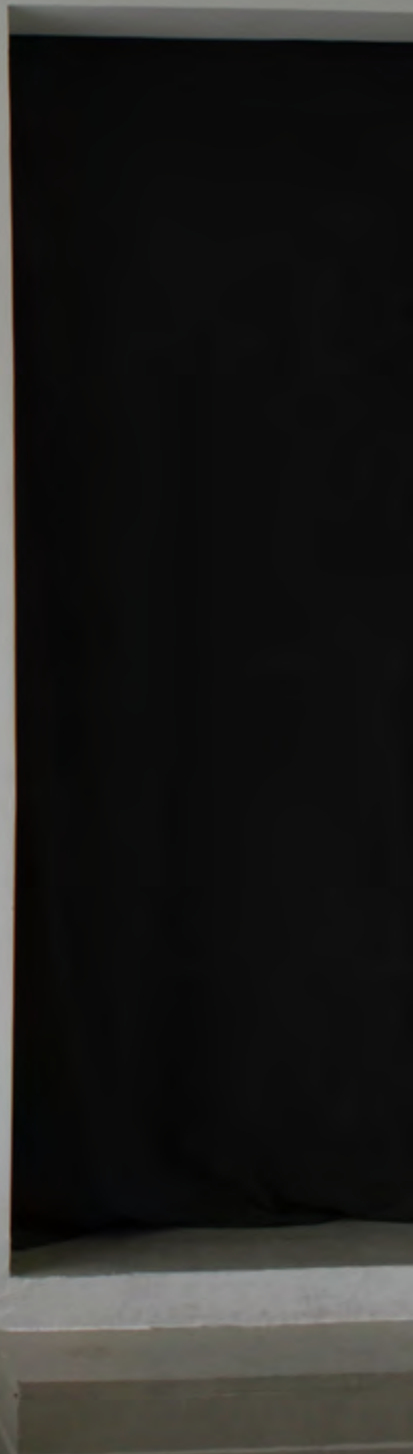


AND CONSIDER

LETTER FROM

IN THE

humblina, numblina, ru
anina, hurtina, hodina to
ne. How did you, Eva, re
believe in themselves and
s supportive "lines" som
nd head for the first t
as never meant, for t















Redacted Information

...the following information is being provided to you for your information and documentation. But we do not intend to disclose this information to any other person or entity, including our employees, unless you give us your express written consent. We will only disclose this information to the extent that you have given us your express written consent. We will only disclose this information to the extent that you have given us your express written consent. We will only disclose this information to the extent that you have given us your express written consent.

Redacted Information

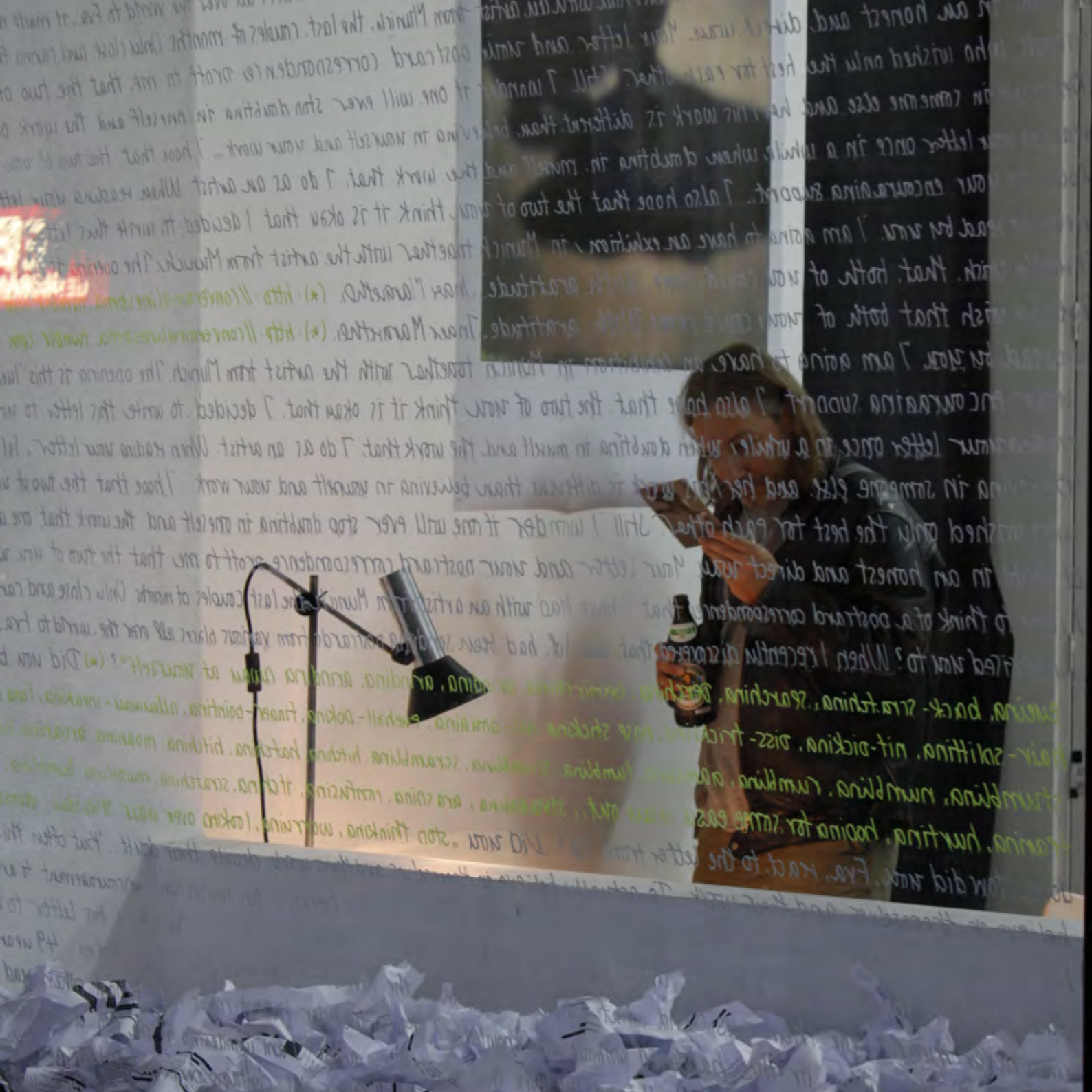
...the following information is being provided to you for your information and documentation. But we do not intend to disclose this information to any other person or entity, including our employees, unless you give us your express written consent. We will only disclose this information to the extent that you have given us your express written consent. We will only disclose this information to the extent that you have given us your express written consent. We will only disclose this information to the extent that you have given us your express written consent.

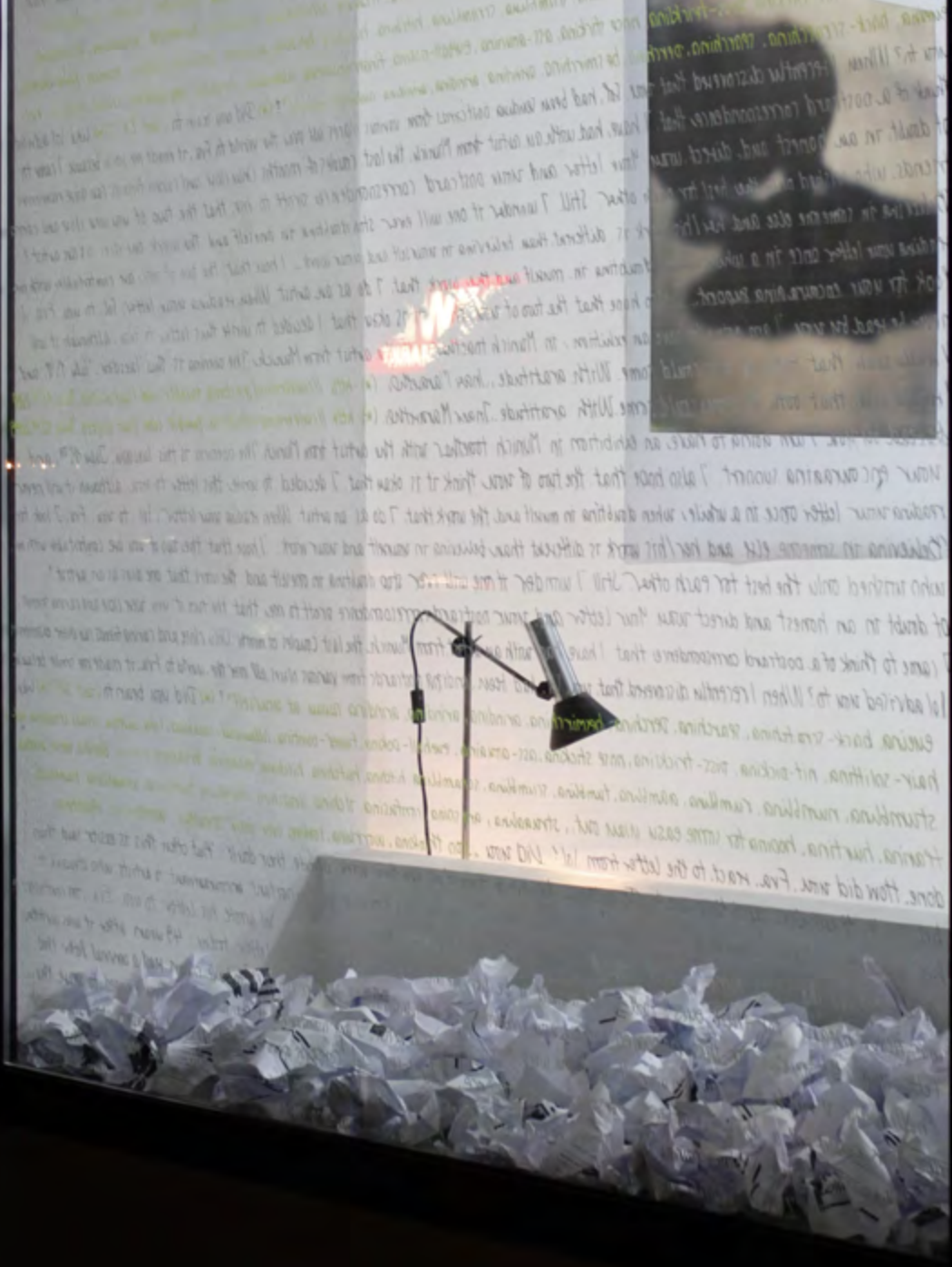
Redacted Information

...the following information is being provided to you for your information and documentation. But we do not intend to disclose this information to any other person or entity, including our employees, unless you give us your express written consent. We will only disclose this information to the extent that you have given us your express written consent. We will only disclose this information to the extent that you have given us your express written consent. We will only disclose this information to the extent that you have given us your express written consent.





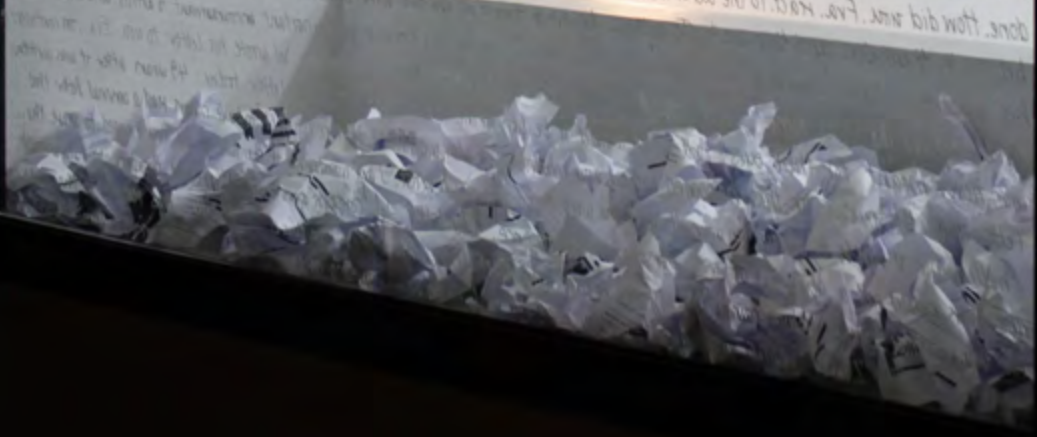




Text appearing in the upper left quadrant of the wall panel.

Text appearing in the upper center of the wall panel.

Text appearing in the upper right quadrant of the wall panel.





Do you
Sorry about the trip
We do a better version of this
Not sure if I am 100% happy with my
Hope we can fix something during
3/20/04
Coloured cubes, rough
3/20/04

Maximum
13 Paper
Dear

er Margrethe Hové Laksen
er Margrethe,
Hi again :) I'm meeting on wednesday to
haven't decided yet, ha
So - Jahresausstellung 11. Juli - W
because one day before Ausstellung
rk. You would probably July 20
nk the exhibition is for
for a longer pe
are you going to
ts to make a catalogue which is
long an

let can still be cre
the exhibition of
and put me just in what

THE
THE

ker" - Gedankenstreusel und Distanzhürden - Inaer, Mararethe Hve

im) und Maximilian Schmölz (München) 15. bis 26. Juli 2014

15. Juli, 19 Uhr Finissage, mit special quests am Sa

19 Uhr Diensta bis Freitag 11-15 Uhr und nach Vereinb

00000000 VORSCHAU Blütenburastr. 17, D-80636 Mü

89-18970129 vorschau@dmwuerfert.de www.vorschau.dmw

89-18970129 vorschau@dmwuerfert.de, www.vorschau.dmw

00000000 VORSCHAU Blütenburastr. 17, D-80636 Mü

19 Uhr Diensta bis Freitag 11-15 Uhr und nach Vereinb

15. Juli, 19 Uhr Finissage mit special quests am

m) und Maximilian Schmölz (München) 15. bis 26. Juli 20

ker" - Gedankenstreusel und Distanzhürden - Inaer, Mararethe Hve